



CHE PERFORMANCE PRODUCTS INSTALLATION INSTRUCTIONS

S197 MUSTANG FRONT SWAYBAR DELETE KIT

Part No. CHE13C: With PowerHouse Turbo

Part No. CHE13D: Standard

Kit Contents

4ea. 1/4-20 x 3/4 Flange Head Bolts	1ea. Driver Side Radiator Bracket
1ea. Passenger Side Radiator Bracket	1ea. Crossmember

WARNING!!: If you lack the necessary skill, tools, or equipment to safely complete this installation, have the component installed by a mechanic with the proper equipment and expertise.

Thoroughly read and understand these installation instructions before beginning the installation. If there is any doubt regarding the procedure, please contact CHE Performance prior to attempting installation.

Please use caution and common sense during the installation. If something doesn't seem correct, please contact CHE for clarification.

Step 1. Raise Vehicle

With the rear wheels properly blocked, raise the front of the vehicle, and support it with jack stands along the structure of the vehicle.

Step 2. Remove Swaybar



Remove the swaybar from the vehicle by first removing the 2 nuts from the swaybar endlinks attached to the front struts. Remove the 4 nuts retaining the swaybar to the swaybar crossmember and remove the swaybar from the vehicle.

Step 3. Disconnect Line Clips



A. Remove the wire harness retainer from the driver's side of the vehicle. Use a punch or other suitable tool to push it through the hole from the backside.



B. On 2007 and later models only, remove the nut retaining the lower coolant hose bracket. Remove the bracket from the vehicle, it will not be re-used.



C. On V8 Models with Air Conditioning, remove the nut securing the A/C line retainer on the Driver's side of the vehicle. Leave the retainer connected to the A/C lines and move it up off of the stud. Do not remove the stud from the crossmember at this time.



D. Release the brake lines from the 2 clips, one on the Driver's side and one on the Passenger side. Leave the brake line clips in the crossmember.

Step 4. Remove Splash Shield



On V8 Models only, remove the 3 screws retaining the front Splash Guard to the Swaybar Crossmember.

Using a small screwdriver or other suitable tool, release the plastic clips that snap the Splash Shield into the Crossmember.



Let the Splash Shield hang from the bumper, it is not necessary to remove the screws retaining the splash shield to the bumper cover.

Step 5. Remove Crossmember



A. Make certain that the radiator is securely retained before proceeding. The radiator can be secured either from the top of the vehicle or below provided that the method used to secure the radiator will not interfere with the removal of the stock crossmember.



B. Remove the factory Crossmember by removing the 4 nuts retaining it to the frame rails. Use caution as the crossmember is fairly heavy.

Step 6. Transfer Retainers



A. Transfer the 2 radiator isolators from the stock crossmember to the 2 new brackets.



B. Transfer the 2 brake line retainers from the stock crossmember to the new crossmember. Use a suitable removal tool to prevent damage to the retainers.



C. V8 Models Only:

Using a small screwdriver, lift the front edge of the A/C line retainer stud and slide the stud out of the Keyhole on the stock crossmember.

Install the stud on the new crossmember by sliding it into the keyhole until it snaps into place.

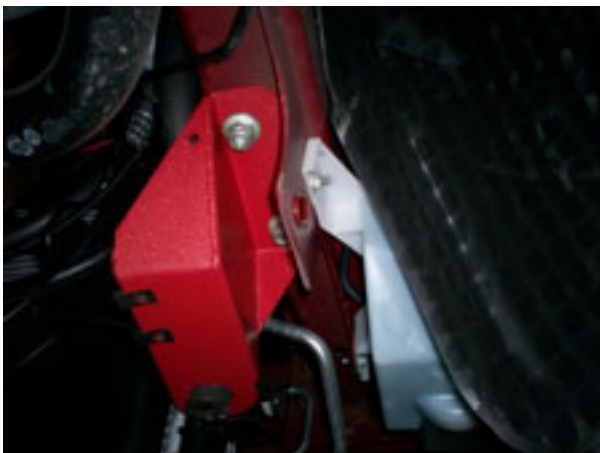


D. V8 Models Only:

Using a small screwdriver, remove the 3 splash shield screw clips by carefully prying them out of the stock crossmember.

Install the screw clips into the new crossmember by pushing them in until they snap into place.

Step 7. Install Radiator Brackets



Loosely install the 2 radiator support brackets on the vehicle using the factory Nuts. ***Do not tighten the nuts at this time.***

Note: On vehicles with the PowerHouse Turbo Kit, the radiator relocation brackets included in the turbo kit will not be used as the new brackets are designed to give the proper radiator relocation.

Step 8. Attach Crossmember



Loosely install the crossmember onto the radiator brackets using the 4 bolts supplied.

Note: The “F” on the crossmember should face toward the front of the vehicle.

Do not fully tighten the nuts at this time.

Step 9. Torque Support Bracket



Making sure that all lines are clear and that the radiator is in the proper location, torque the 2 radiator support bracket nuts to 45-50lb-ft. Do this on both sides of the vehicle.

Step 10. Install Lines



A. Install the brake lines into the retainers on the crossmember. On V8 Models, install the A/C line retainer on the stud using the factory nut.



B. Install the electrical line retainer on the Driver's Side of the vehicle into the hole in the rear of the Radiator Brackets.

Step 11. Tighten Crossmember



Torque the 4 Crossmember Bolts to 25-30lb-ft.

Step 12. Install Splash Shield



On V8 Models, install the splash shield onto the crossmember using the 3 factory screws.

Step 13. Inspect Installation

Inspect the installation to insure that there are no clearance issues and that all fasteners are properly tightened. If installation is correct, safely lower the vehicle.

Technical Support/Contact Information

e-mail: support@cheperformance.com

Phone: 814-402-0077

Website: www.cheperformance.com